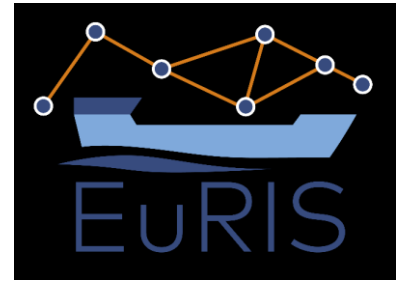


Access to Inland Shipping Information and more

Peter Oudenes
Rijkswaterstaat
The Netherlands

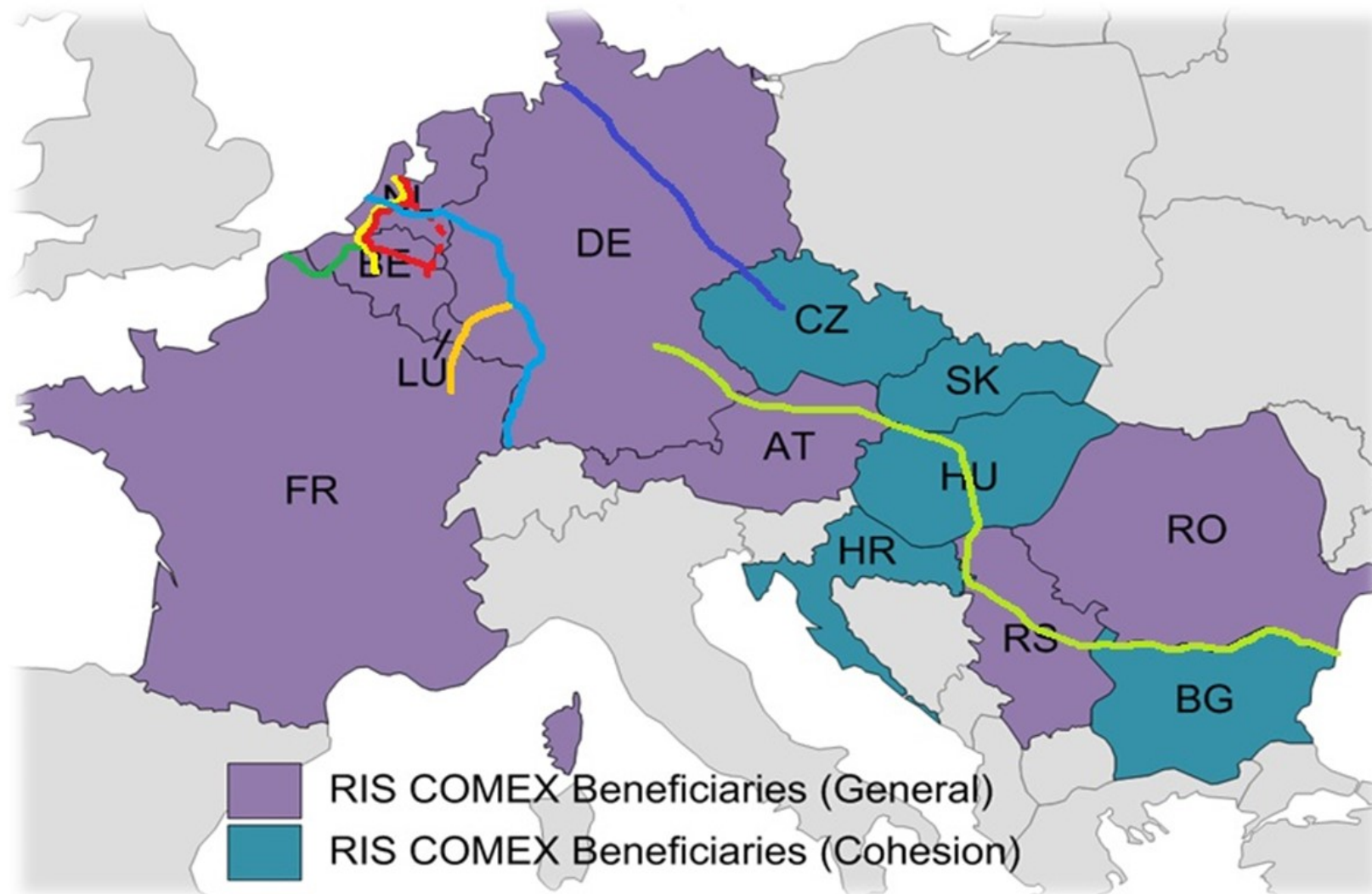
COMEX to EuRIS



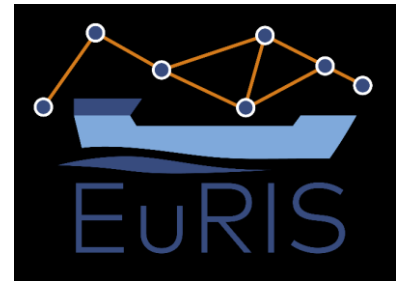
The objectives of COMEX

- Uniform and harmonized services on the waterways
 - Better utilization of the infrastructure
 - Inland shipping as an attractive partner in logistics
- *Increasing the efficiency of inland shipping as a transport mode*





Corridor Management



Corridor Management is defined as information services among fairway authorities mutually and with waterway users and related logistic partners in order to optimise use of inland navigation corridors within the network of European waterways [CoRISMa] to ...

- Enable reliable route planning by supplying dynamic and static infrastructural information (level 1)
- Enable reliable travelling times for voyage planning and for traffic management, by providing traffic information (level 2)
- Support transport management of the logistic partners (level 3)

Corridor management



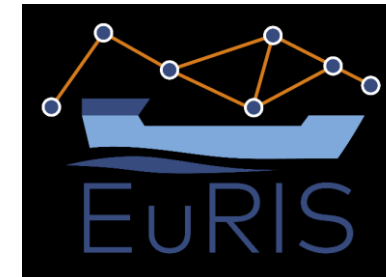
**Level 1
Fairway
Information**



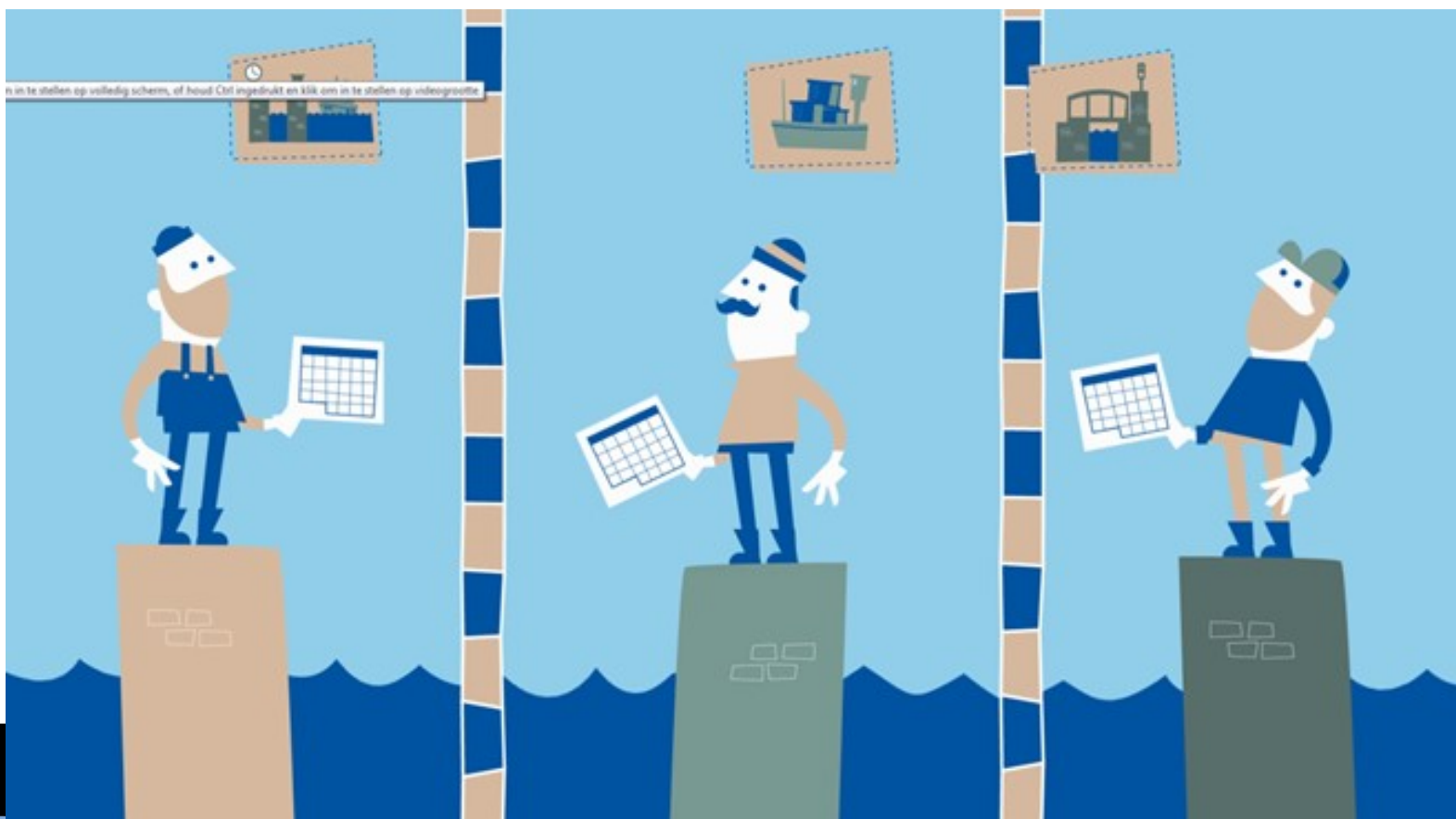
**Level 2
Traffic Information**
a) Actual
b) Predicted

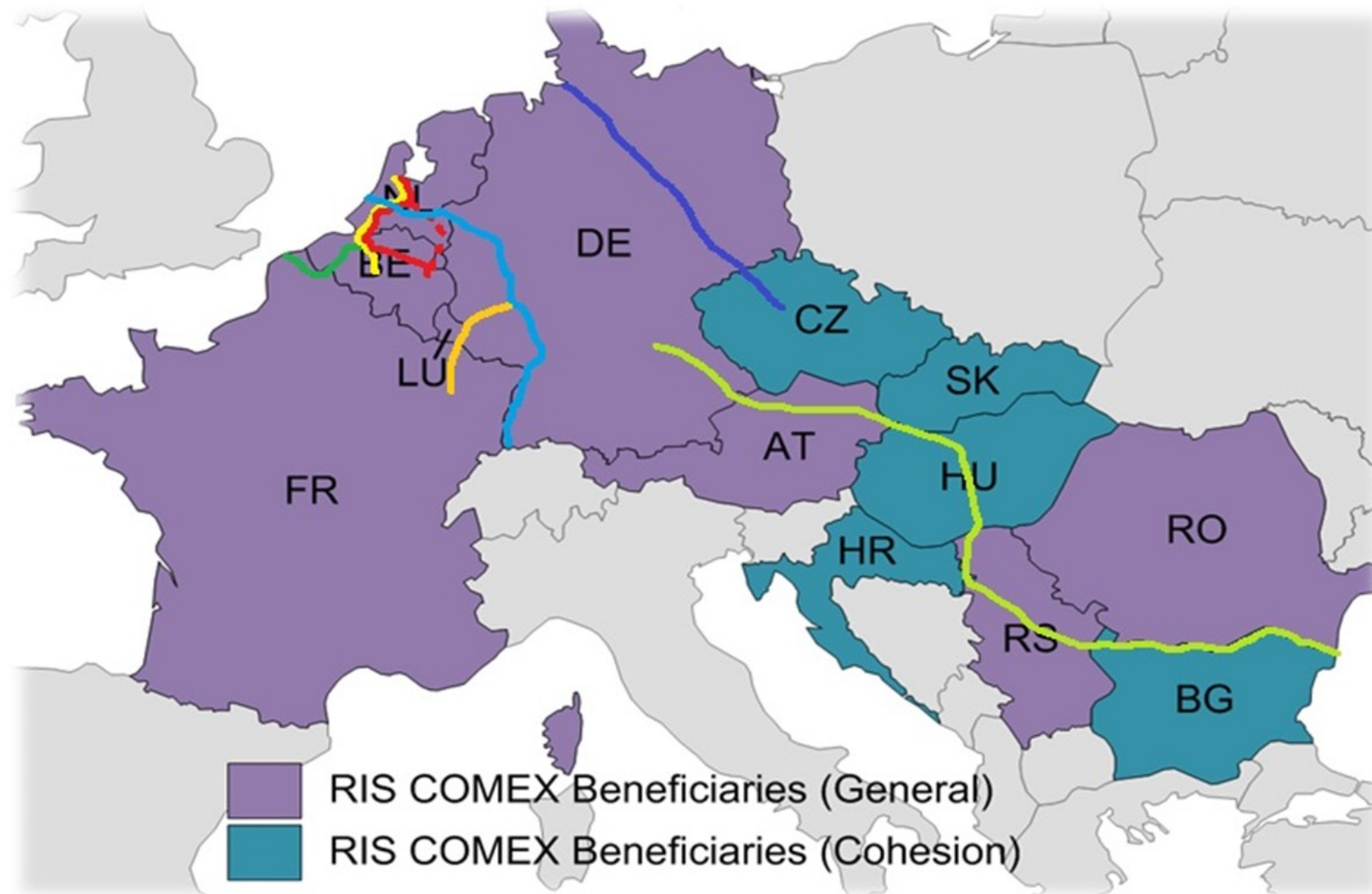


**Level 3
Information to
logistic partners**



And we have done it all and more! Live in September 2022!!!!

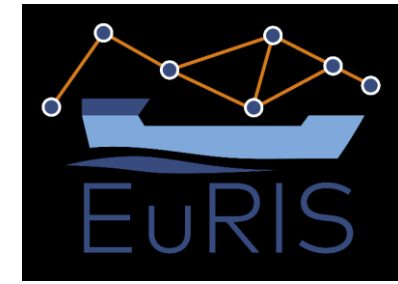




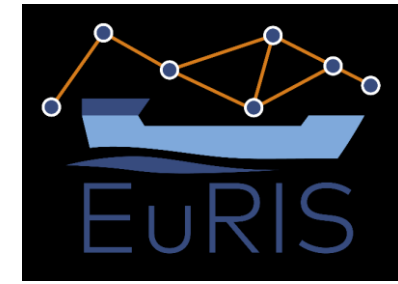
FAIRWAYS BASED ON CEMT CLASS



Summary of the available information



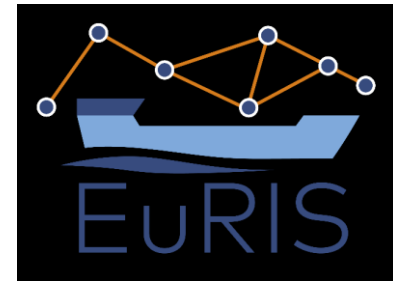
- Provide navigation-based information on fairway and/or navigable water areas (including ports)
- Provide information on Harbours
- Provide information on locks
- Provide information on bridges
- Provide navigation-based information on fairway and/or navigable water areas (including ports)
- Provide information on obstructions and limitations
- Provide Water level related information
- Provide information on navigation rules and regulations
- Provide waterlevel and related information
- Provide meteorological information
- Provide information on obstructions and limitations
- Water level related information
- Provide information on Ports
- Provide Water level related information
- Provide waterlevel and related information
- Provide information on Terminals
- TIS. 3 Actual overview of the position of vessels on a certain stretch and/or corridor
- TIS. 4 Actual overview regarding the operational status or operation of objects
- TIS. 5 Actual passage of an object by individual vessels
- CAS.1 Information on incidents focused on traffic situation
- CAS.2 Assessment of the traffic situation in the situation of an incident
- FIS.4 Long time obstructions in the fairway
- FIS.6 Temporary obstructions in the fairway
- FIS.8 State of the rivers, canals, locks and bridges in the RIS area
- FIS.10 Malfunctions of aids to navigation
- FIS 11 Short term changes of lock and bridge operating times
- FIS 12 Short term changes of aids to navigation
- TIS. 1 Statistical overview traffic flows including the density for certain vessel classes (CEMT)/ Means of Transport
- TIS. 2 Statistical overview regarding passage time of objects for certain vessel classes (CEMT)
- TIS. 6 Actual berth occupation
- "TIS.7 Predicted traffic flows including the density for certain vessel classes (CEMT) / Means of Transport"
- TIS.8 Predicted passage time of objects for certain vessel classes (CEMT)
- TIS.9 Predicted berth occupation
- "TIS.7 Predicted traffic flows including the density for certain vessel classes (CEMT) / Means of Transport"
- TIS.8 Predicted passage time of objects for certain vessel classes (CEMT)
- TIS.9 Predicted berth occupation
- Etc etc etc



Accessibility of the information

- All public data is freely accessible by means of :
 - The website
 - API's,
- All private data (GDPR) is only accessible after consent by the data-owner (Read : The Skipper)
 - Sharing information, for example their ETA
 - Request access to information of others
 - Receive personal information

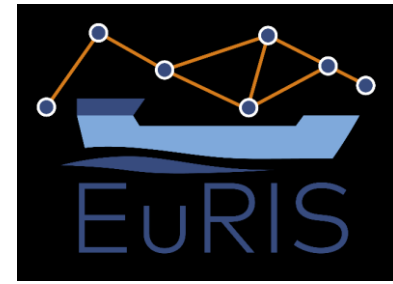
Guarantees for sustainability



European Corridor Management Agreement (ECMA)

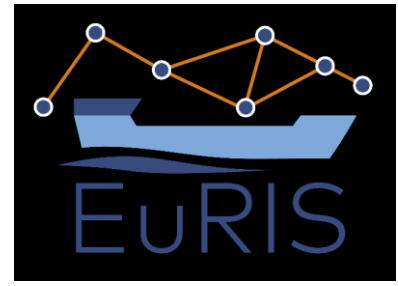
- Agreement signed by all 13 parties of COMEX
- Setting rules for continuous operation of EuRIS (including Budget-Plan)
- Binding Legal arrangements for data exchange in order to comply with GDPR and to avoid market disturbance in inland navigation
 - Between fairway authorities
 - Between EuRIS and third parties
 - Data sharing about ship, voyage, cargo and planning only with consent of skippers and/or transport companies

Open Issues and Next Steps



- Implementation of all developed SSD's
- Improvement and harmonisation of Service Levels in corridors and network
- Fine tuning of user interface with end users
- Connection and Interchange of data with other transport modes especially road and rail
- Poland and Switzerland participate in this cooperation
- (Further)Integration with other Applications/Platform, like CEERIS, BICS, Inland ECDIS, etc etc, PCS's

Recap



- EuRIS is Live => <https://www.eurisportal.eu/>
- One stop shopping for all(most) inland shipping information
- GDPR compliance, private data only by consent!
- Accessible by means of The Website or API's
- Sustainability Cooperation

FAIRWAY OBJECTS

[Map](#)

[Locks](#)

[Bridges](#)

[Berths](#)

[Terminals](#)

RULES

[Waterway charges](#)

[Areas of competence](#)

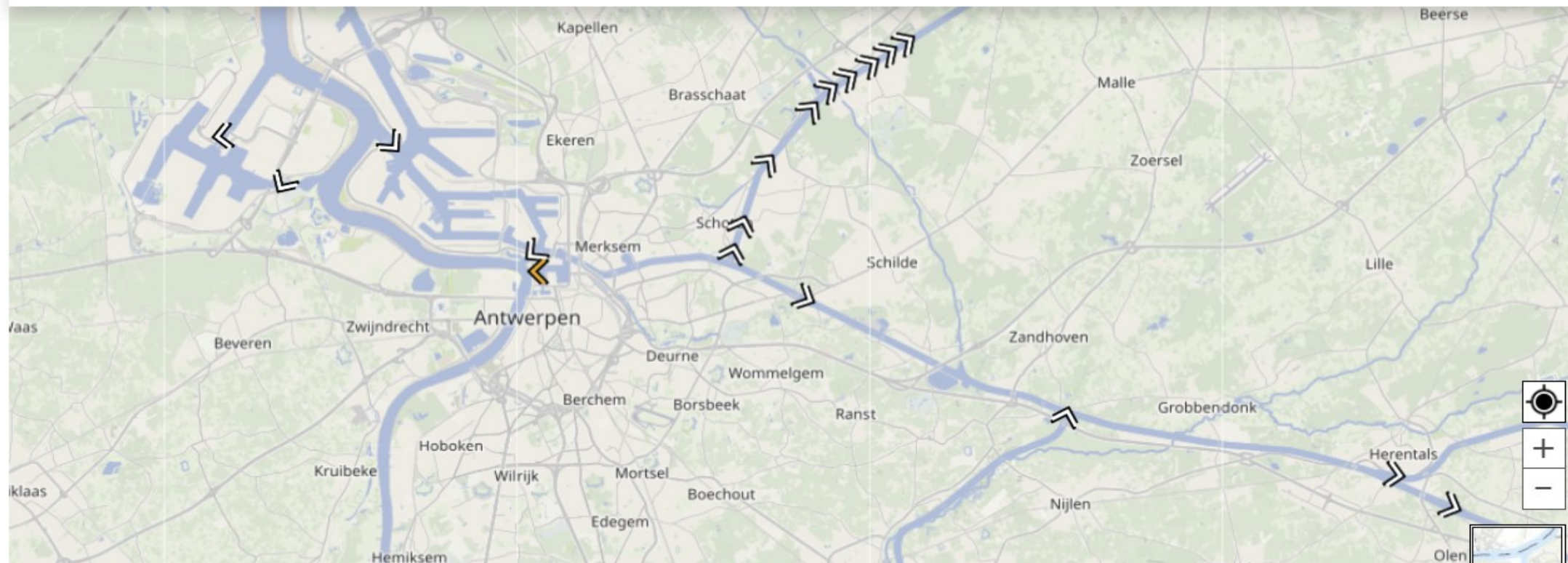
[Rules and regulations](#)

TECHNICAL INFORMATION


[CEMT map](#)

[Fairway sections](#)

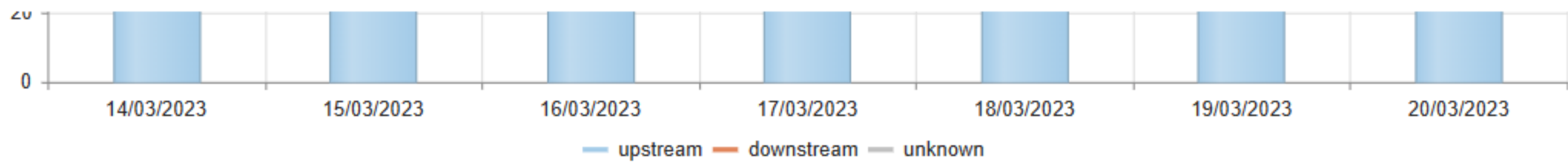
[RIS Index](#)



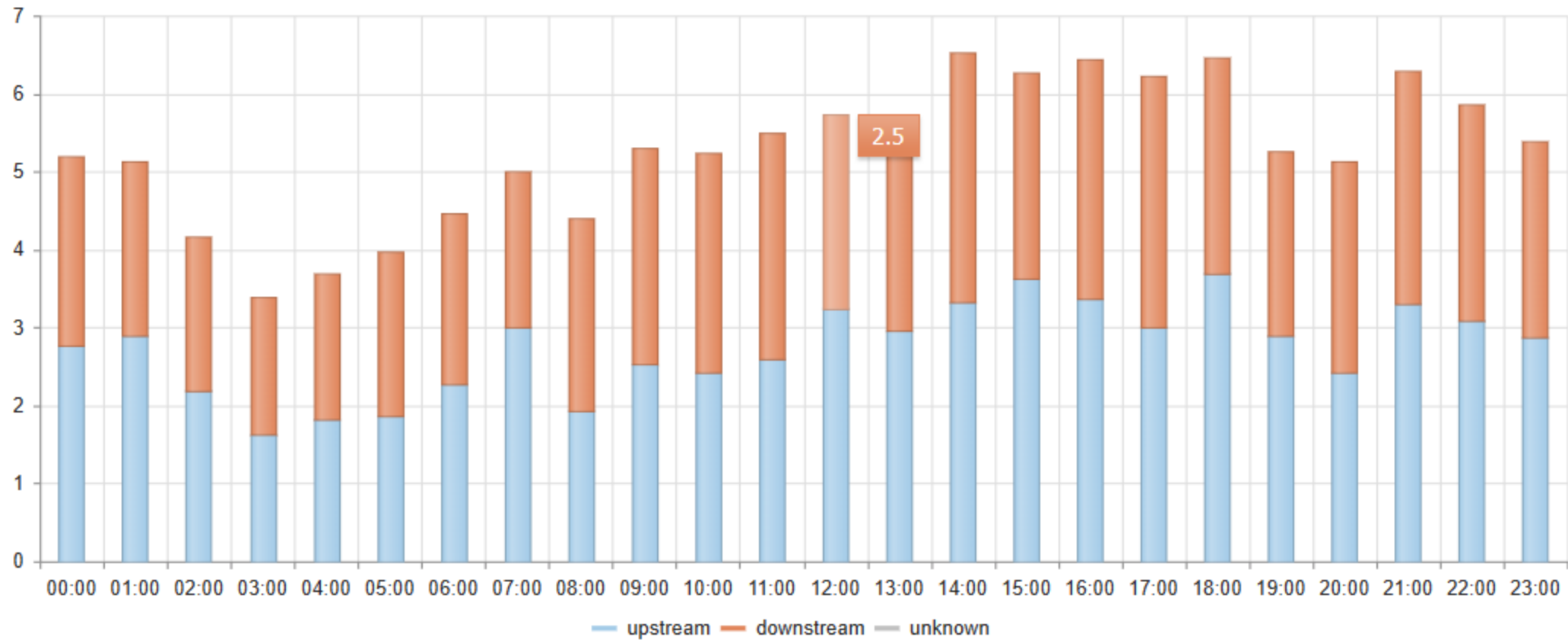
OPERATING HOURS

Today ◀ ▶  20 March 2023 - 26 March 2023 ↻							
	20/03	21/03	22/03	23/03	24/03	25/03	26/03
00:00	No operation 00:00 - 06:00	No operation 00:00 - 06:00	No operation 00:00 - 06:00	No operation 00:00 - 06:00	No operation 00:00 - 06:00	No operation 00:00 - 06:00	No operation 00:00 - 00:00
03:00	all > all directions	all > all directions	all > all directions	all > all directions	all > all directions	all > all directions	all > all directions
06:00	Pleasure only 06:00 - 22:00	Pleasure only 06:00 - 22:00	Pleasure only 06:00 - 22:00	Pleasure only 06:00 - 22:00	Pleasure only 06:00 - 22:00	Pleasure only 06:00 - 22:00	
09:00	pleasure crafts > all directions	pleasure crafts > all directions	pleasure crafts > all directions	pleasure crafts > all directions	pleasure crafts > all directions	pleasure crafts > all directions	
12:00							
15:00							
18:00							
21:00	No operation	No operation	No operation	No operation	No operation	No operation	





AVERAGE NUMBER OF PASSAGES PER HOUR



NUMBER OF VESSELS IN AND NEARBY THE LOCK



TRAFFIC IMAGE

Map

NOTICES TO SKIPPERS

Map

Table

WATERLEVELS AND DISCHARGES

Map

Table

Other sites

NETWORK IMPACT

Map

Table

BERTH OCCUPATION

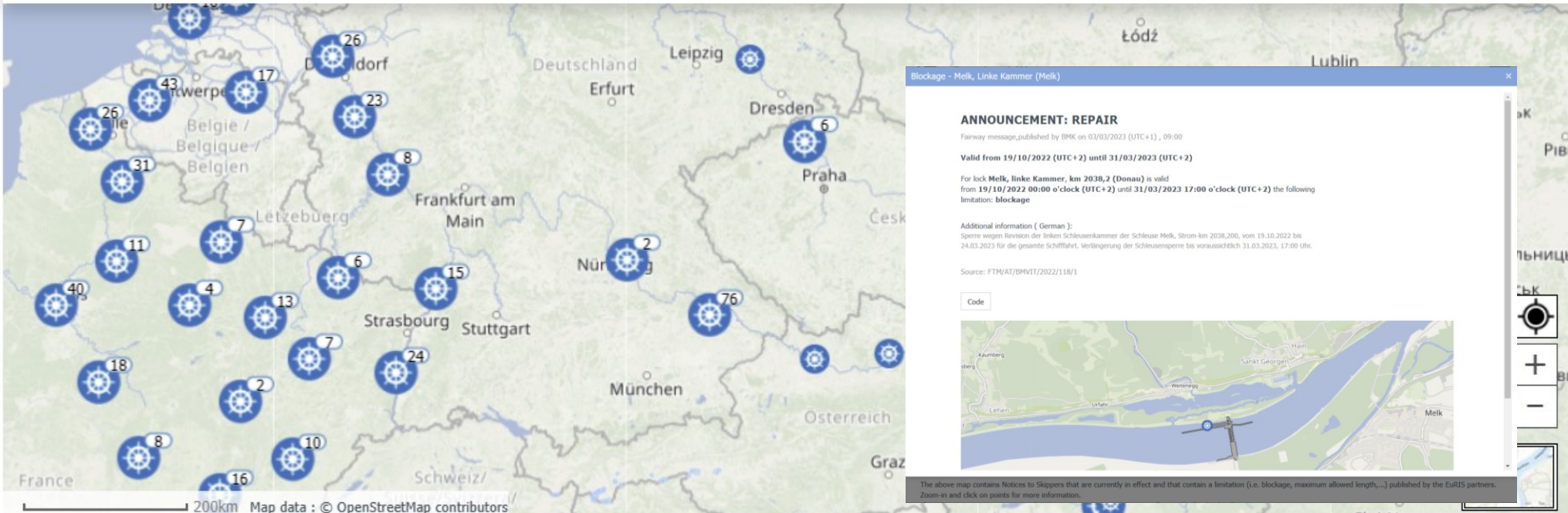
Map

ACTUAL OBJECT STATUS

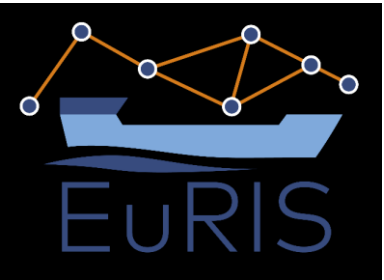
Map

Bridges table

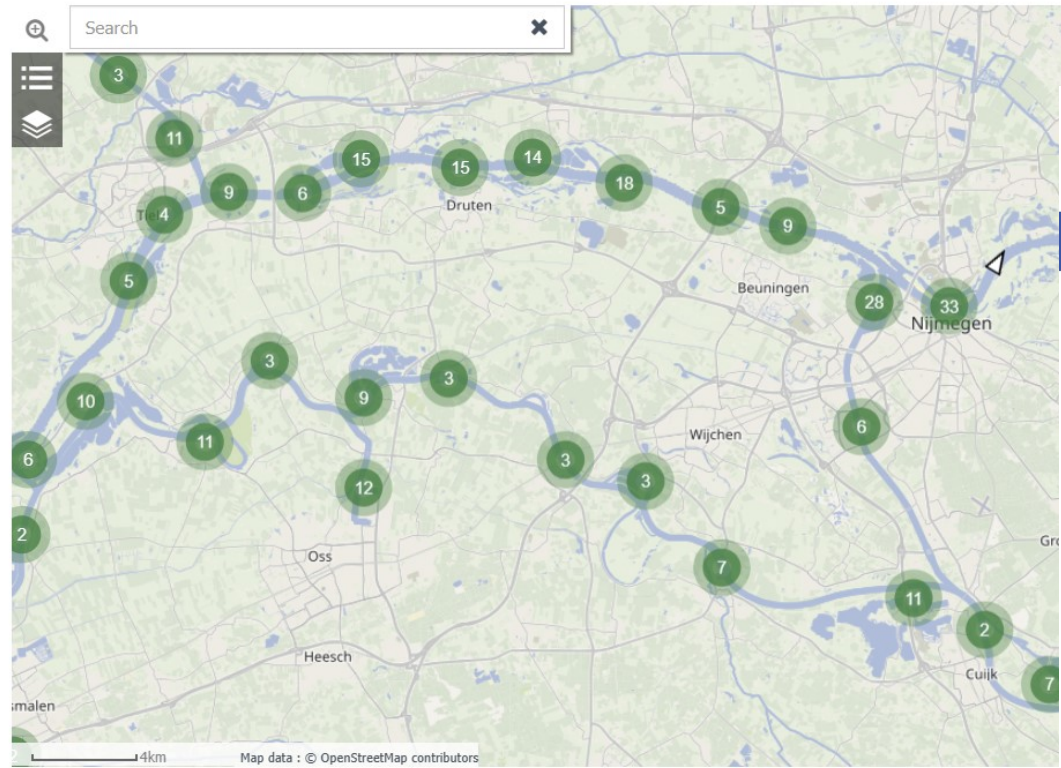
Locks table



The above map contains Notices to Skippers that are currently in effect and that contain a limitation (i.e. blockage, maximum allowed length,...) published by the EuRIS partners. Zoom-in and click on points for more information.



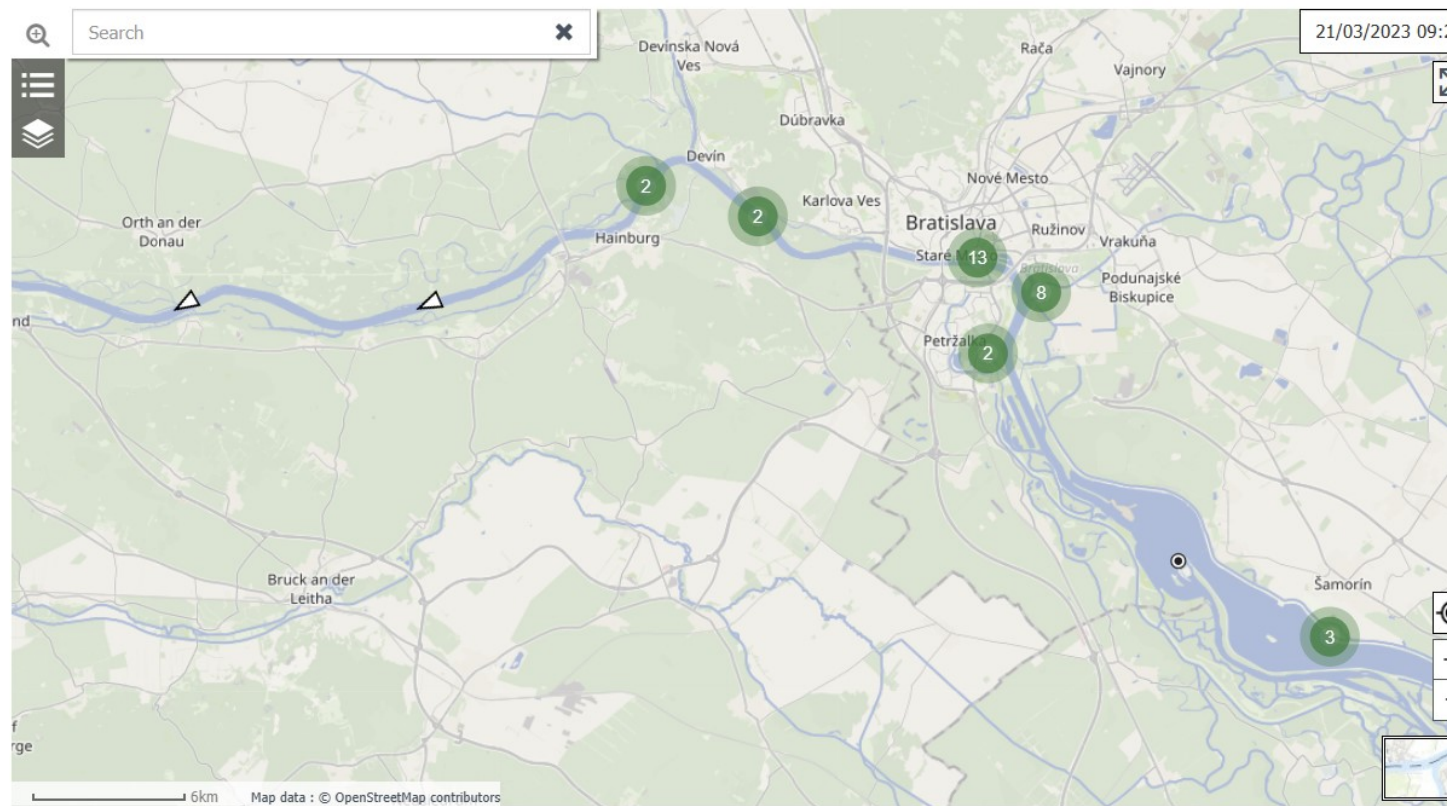
ACTUAL TRAFFIC IMAGE

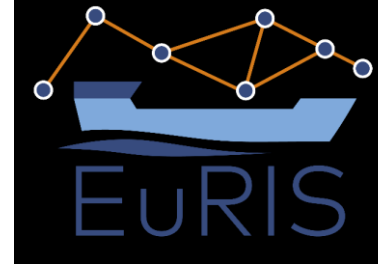


The map shows anonymized AIS-data. If you have sufficient rights, you can see more information on the map. Only authorized users get information about the presence of dangerous goods. For information and registration go to </myprofile>

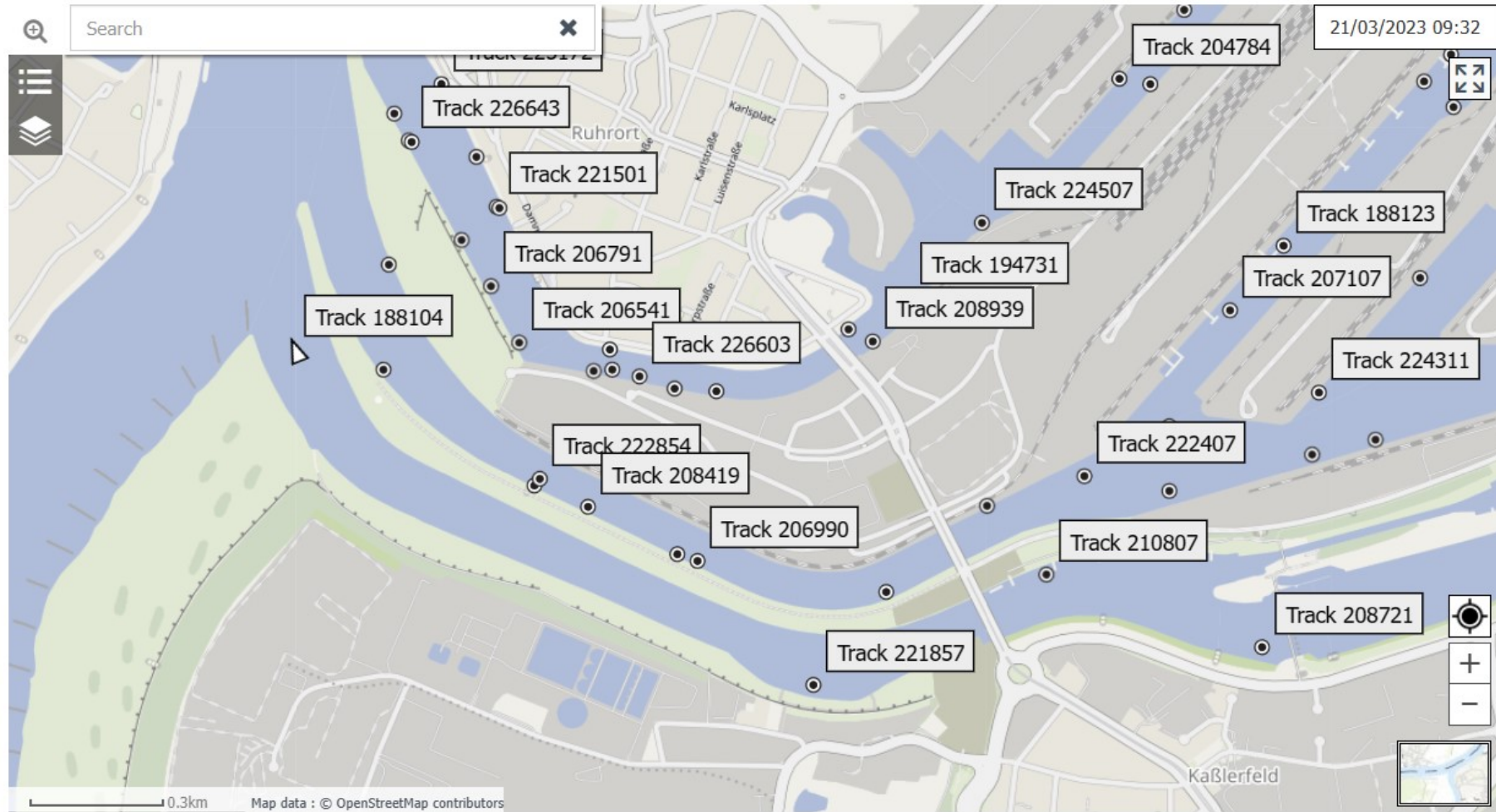


ACTUAL TRAFFIC IMAGE





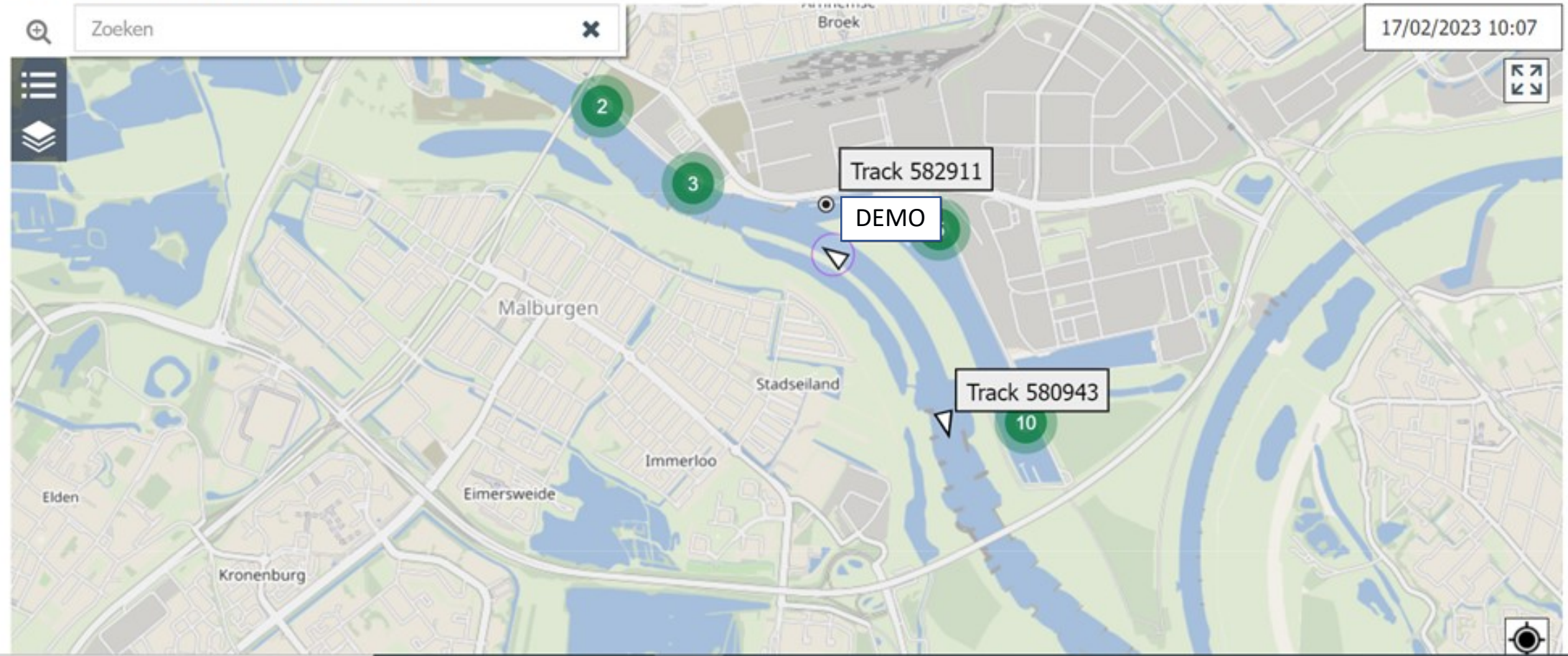
ACTUAL TRAFFIC IMAGE



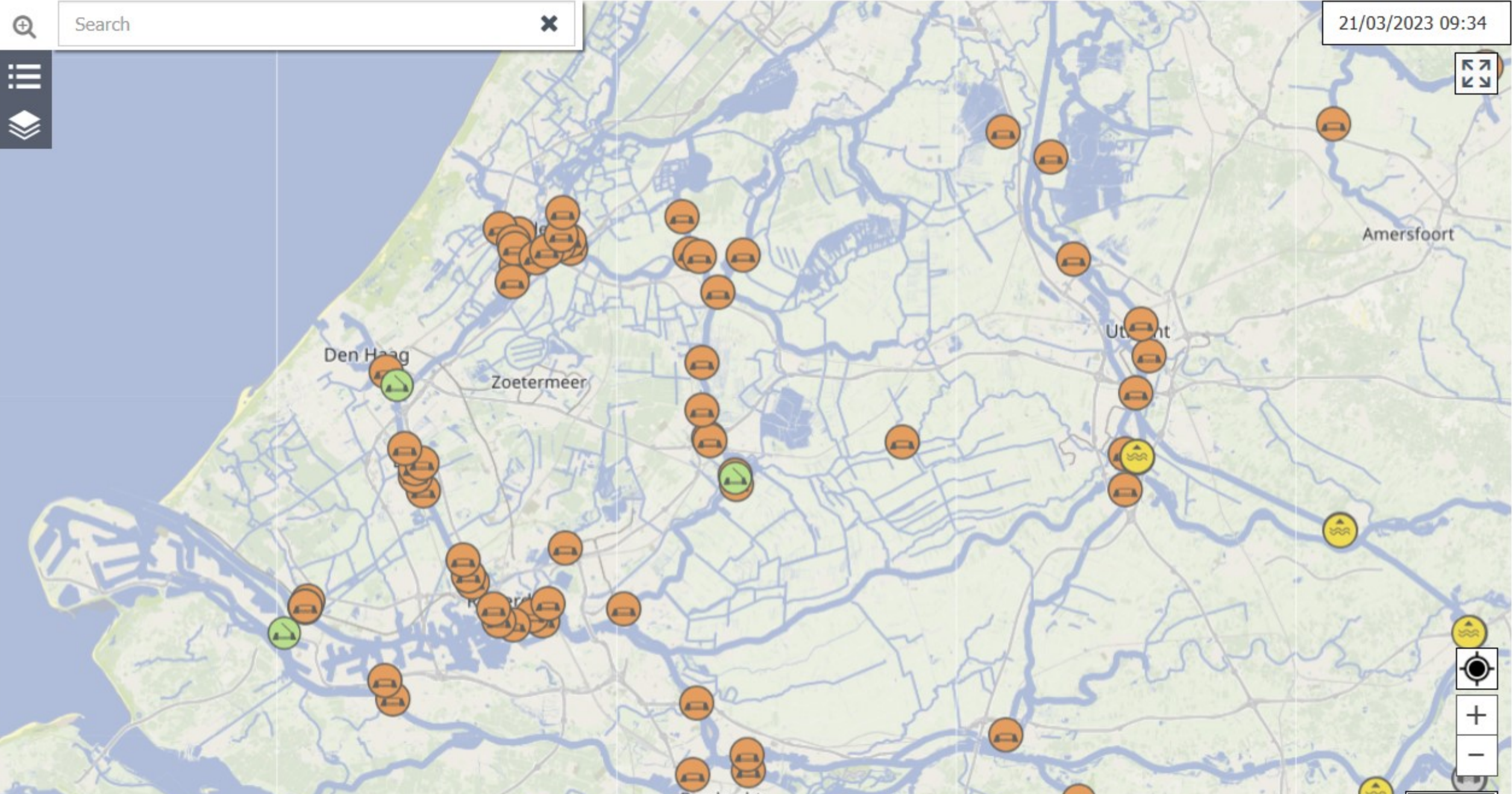
The map shows anonymized AIS-data. If you have sufficient rights, you can see more information on the map.

Only authorized users get information about the presence of dangerous goods. For information and registration go to </myprofile>

ACTUEEL VERKEERSBEELD



ACTUAL STATUS OF BRIDGES AND LOCKS IN MAP



HYDROMETEO MAP

Wildungsmauer

Water level

314 cm ZPG	27/08/2021 9:15
Location	Wildungsmauer
Supplier	NtS WRM - viadonau
Time series	Water level @ Wildungsmauer

[more details](#)

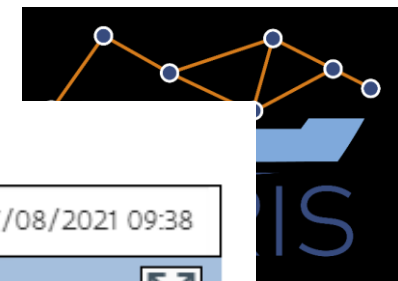
27/08/2021 09:38

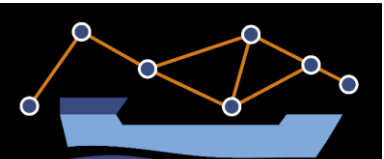
314 cm ZPG

Wildungsmauer

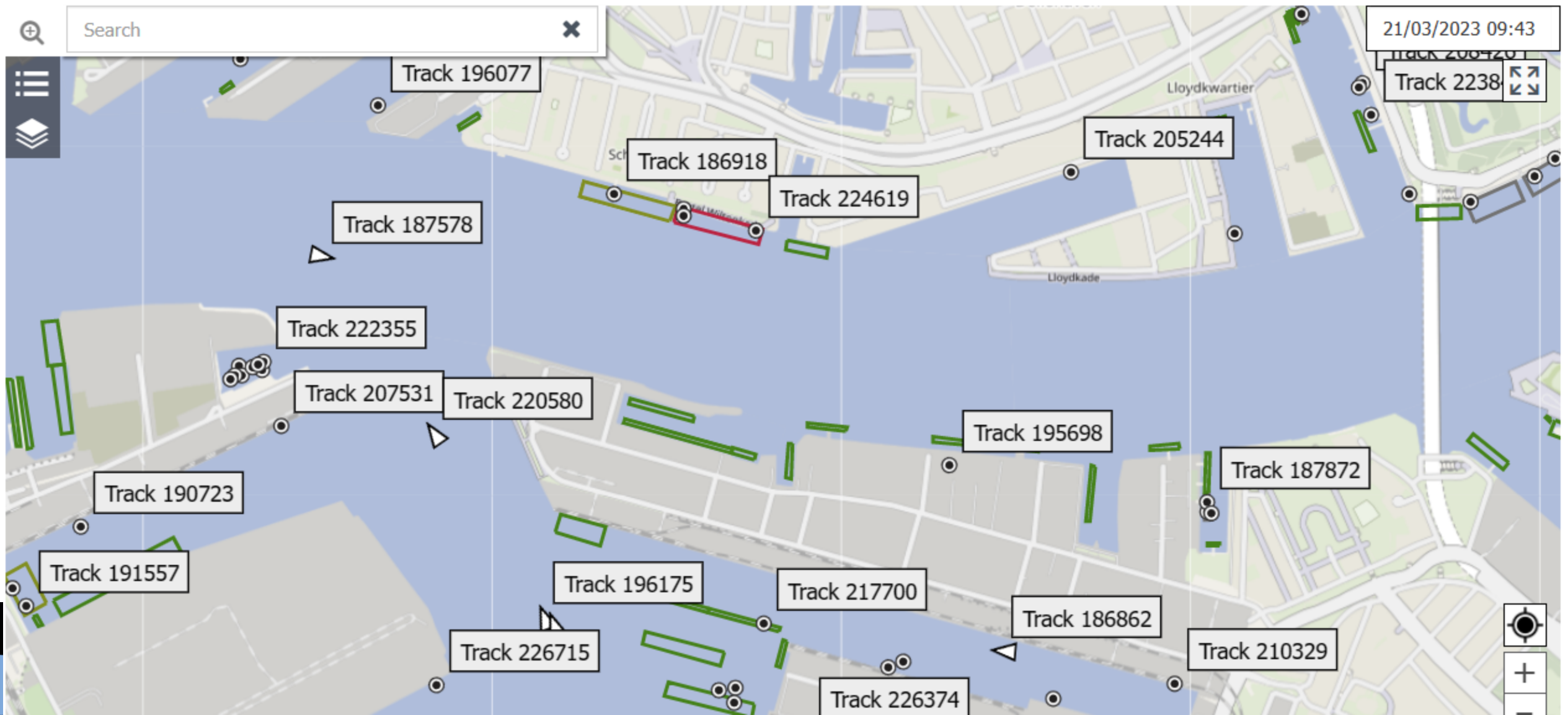
0.3km

Map data : © OpenStreetMap contributors





BERTH OCCUPANCY



EURIS SERVICES

[Routeplanner](#)[Voyageplanner](#)[Voyage- or routeplanner](#)

RIS SERVICES

[Electronic reporting](#)[Inland ENC](#)

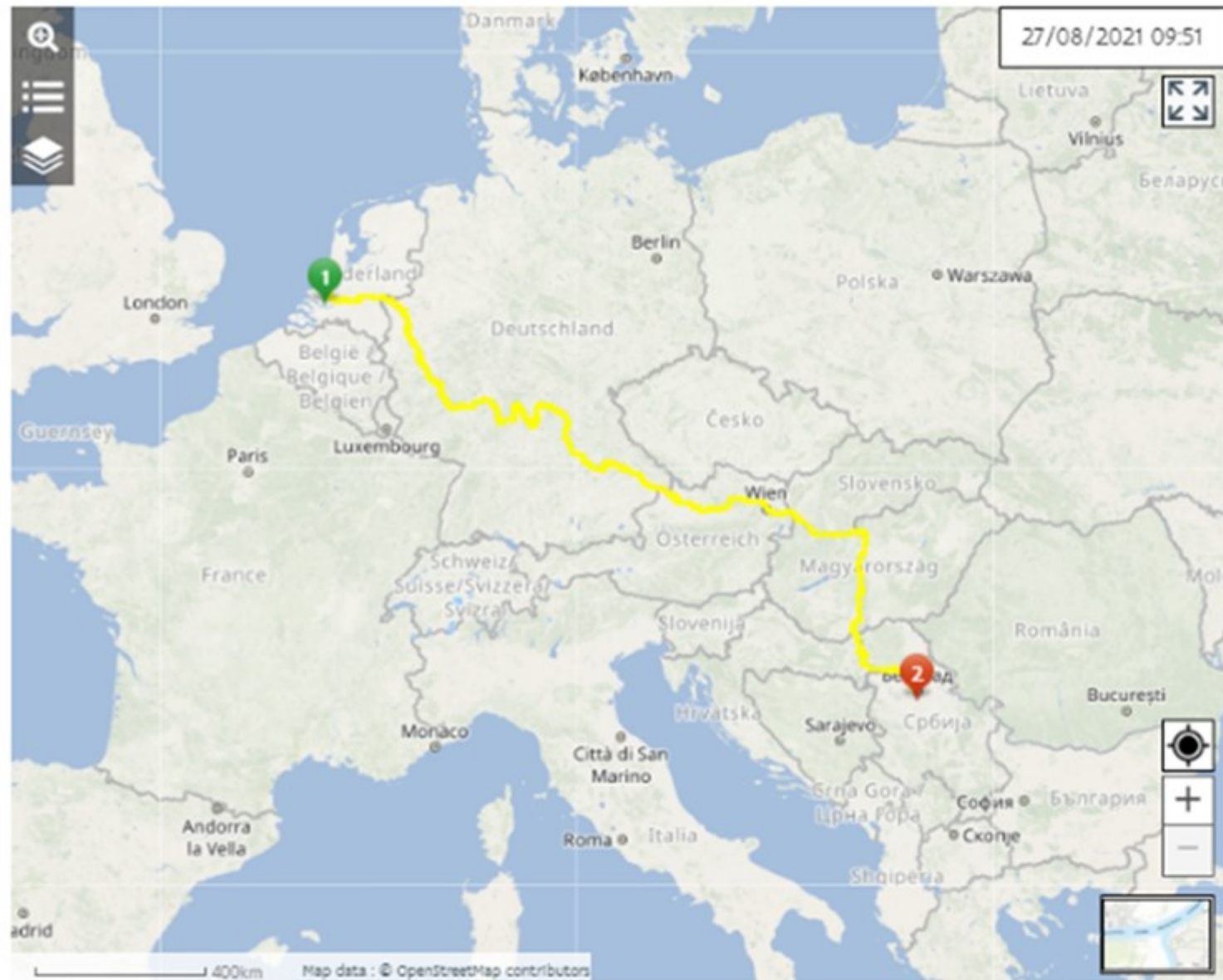
OTHER SERVICES

[Webservices](#)

MESSAGES

[MessageInbox](#)[+ Add intermediate stop](#)[Calculate route](#)[More options](#) 

COMPUTE YOUR ROUTE



DIRECTIONS

Rijnhaven te Rotterdam

Port of Belgrade

+ Add intermediate stop

Calculate route

More options

Number of locks	66		
Duration	169 h 44 min		
Total length	2.287.317 km		
Tide-dependent	Yes		
Lowest CEMT class	IV		
Permissible dimensions			
Depth	250 m	Height	4 m
Length	85 m	Width	9.50 m

Departure from Rijnhaven te Rotterdam

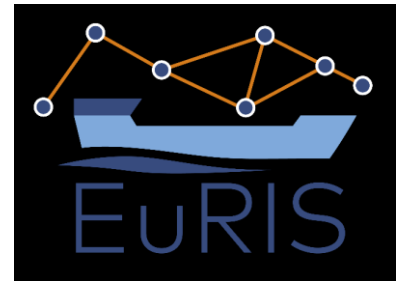
Meldpunt (Radio Calling-In Point) VIN(R64698)
VHF 20 null

Rijnhavenbrug (Rotterdam)
Clearance height (open)
Clearance height (closed) 4.50 m
Width 25 m

Bear left towards Nieuwe Maas



Disclaimer



The images and information on the following slides are only visible to registered users and with the consent of the data-owner (Skipper).

This in accordance with GDPR.

Object Volkeraksluizen, OOSTSLUIS (Message "lokbsn" not found in list "REF.RISFunction")

Start operation 21/03/2023 9:44

ETD 21/03/2023 10:31

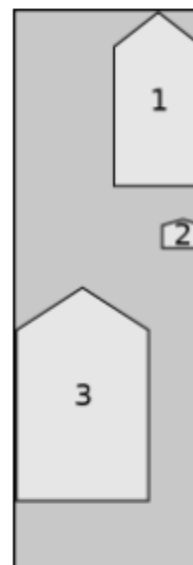
Direction DOWNSTREAM

Status REALIZED

OPERATION INFO

Sequence	Vessel	Cone
1		1
2	Passenger Ship (Inland)	
3	Motor tanker	0

Number of small vessels 0



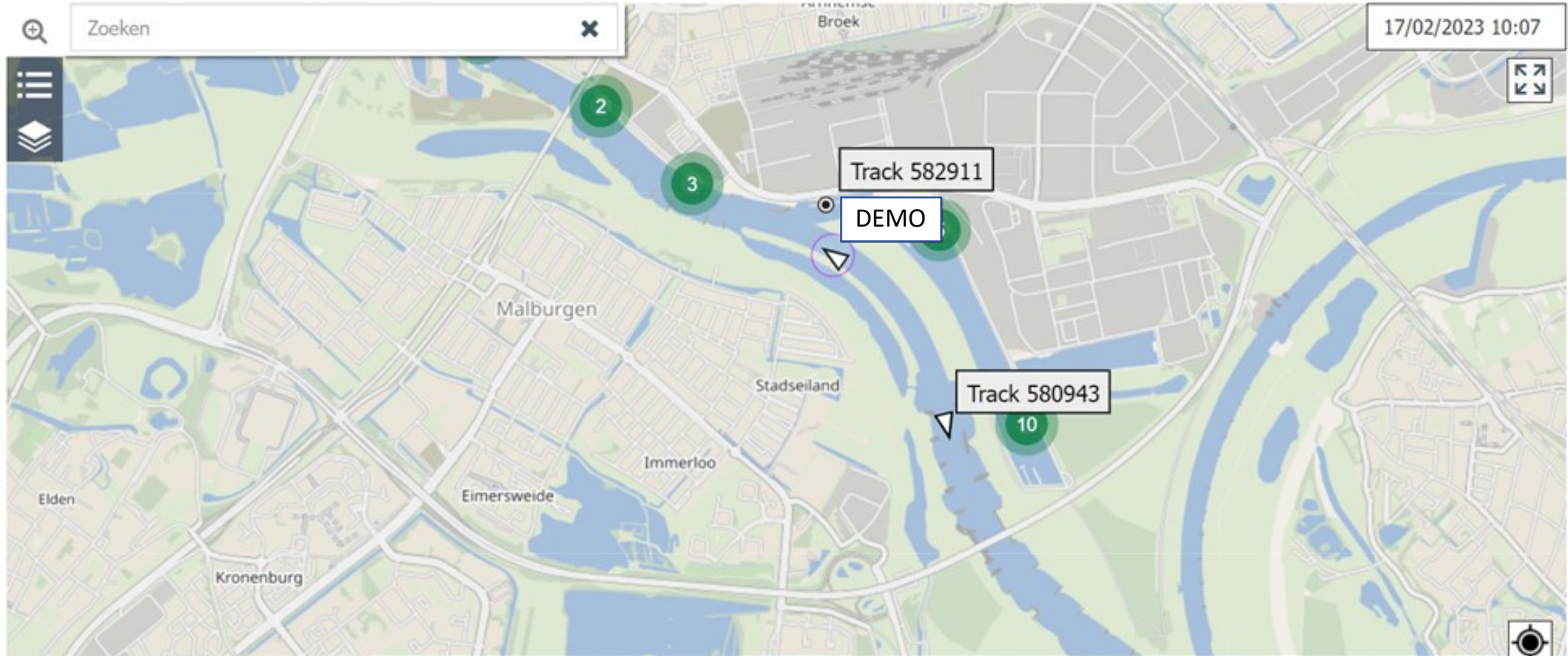
MESSAGE INFO

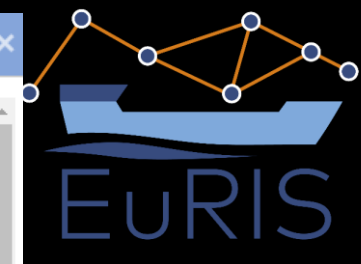
Type TIS-OA 0.1.0

Message id b09bb26e-5fe9-4103-bf25-878c3178fc76

Voyage id 30aaebd5-28c1-4e3f-a611-f0deacab2329

ACTUEEL VERKEERSBEELD





General

Transport

Hulls

Administration

VOYAGE

Length	255 m
Width	24 m
Draught	1.80 m
Max. tonnage	10037 tonnes
Clearance	
Number of cones	
Number of persons	8
Number of passengers	0

DEPARTURE

Location name	
Terminal	Veliko Gradiste 2
Departure time (ETD)	21/03/2023 10:30

ARRIVAL

Location name	Drobeta-Turnu Sev
Terminal	Anchorage Area
Arrival time (ETA)	21/03/2023 15:00

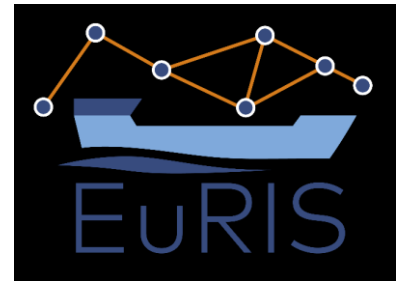
HULLS

Name	Number	Number Type	Equipment	Length	Width	Draught
		3		34.65 m	10.09 m	1.80 m
		3		71.08 m	11.65 m	1 m
		3		71.05 m	11.60 m	1 m
		3		76 m	11.03 m	1 m
		3		71.03 m	11.63 m	1.36 m
		3		76.18 m	11 m	1 m
		3		71.05 m	11.06 m	1.50 m

LOADS

Hullname	Name	Weight	Packaging Group
----------	------	--------	-----------------

Questions?



Peter Oudenes

Rijkswaterstaat

euris@rws.nl

